



NIDAanalyse

The evaluation tool for
statistics and reports





Discover
NIDAanalyze!



CONTENT

OVERVIEW

- 4 NIDAanalyse
- 5 Module overview
- 6 Row groups

FUNCTIONS

- 8 Options at a glance
- 9 NIDAanalyse Dashboard - Overview

MODULES

- 10 Basic
- 11 Long-term evaluation
- 12 Statistics editor
- 13 Data warehouse
- 14 Dashboard
- 15 Routine reports
- 16 Cockpit
- 17 Rights and roles

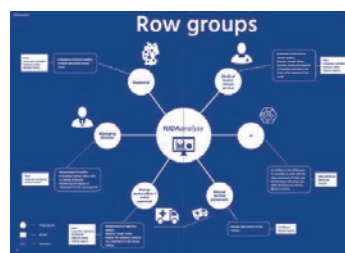
SERVICES

- 18 Benefits
- 19 From the standpoint of IT...



MODULE DIVERSITY

Discover NIDAanalyse's various modules and tools and take advantage of our wide range of products. More on **p. 5**



ROW GROUPS

To learn how you personally can benefit from NIDAanalyse, go to **p. 6–7**

COMMUNICATION

How does NIDAanalyse work? To gain a greater technical understanding of the software, go to **p. 19**



BENEFITS

To see all the benefits of NIDAanalyse at a glance, go to **p. 18**

Response evaluations at a glance

Evaluate response documentation and data capture?

Have statistics reports at a glance?

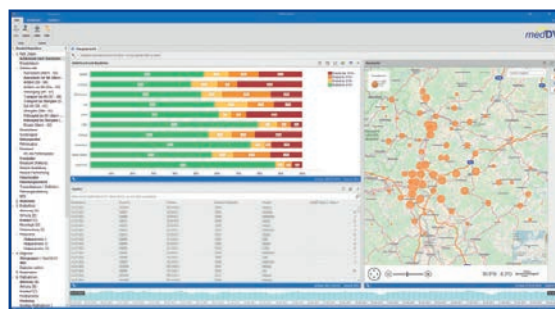
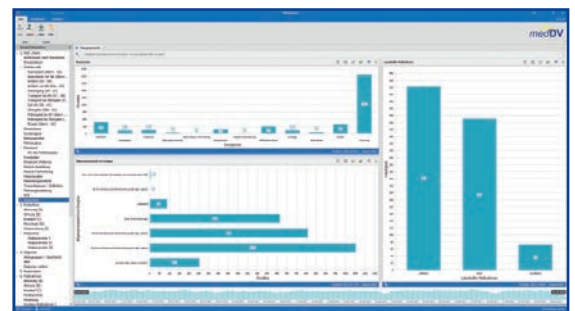
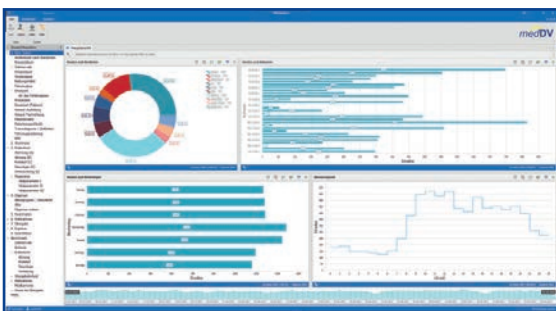
NIDAAnalyze gives you a detailed, clear evaluation of your responses!

With NIDAAnalyze, a wide variety of evaluations can be created, stored, and issued. Whether a pie or bar chart, a list view, or maps for geo-based displays – comparisons and developments can be shown at a glance.

You can explore and evaluate your data with the interactive charts and graphs.

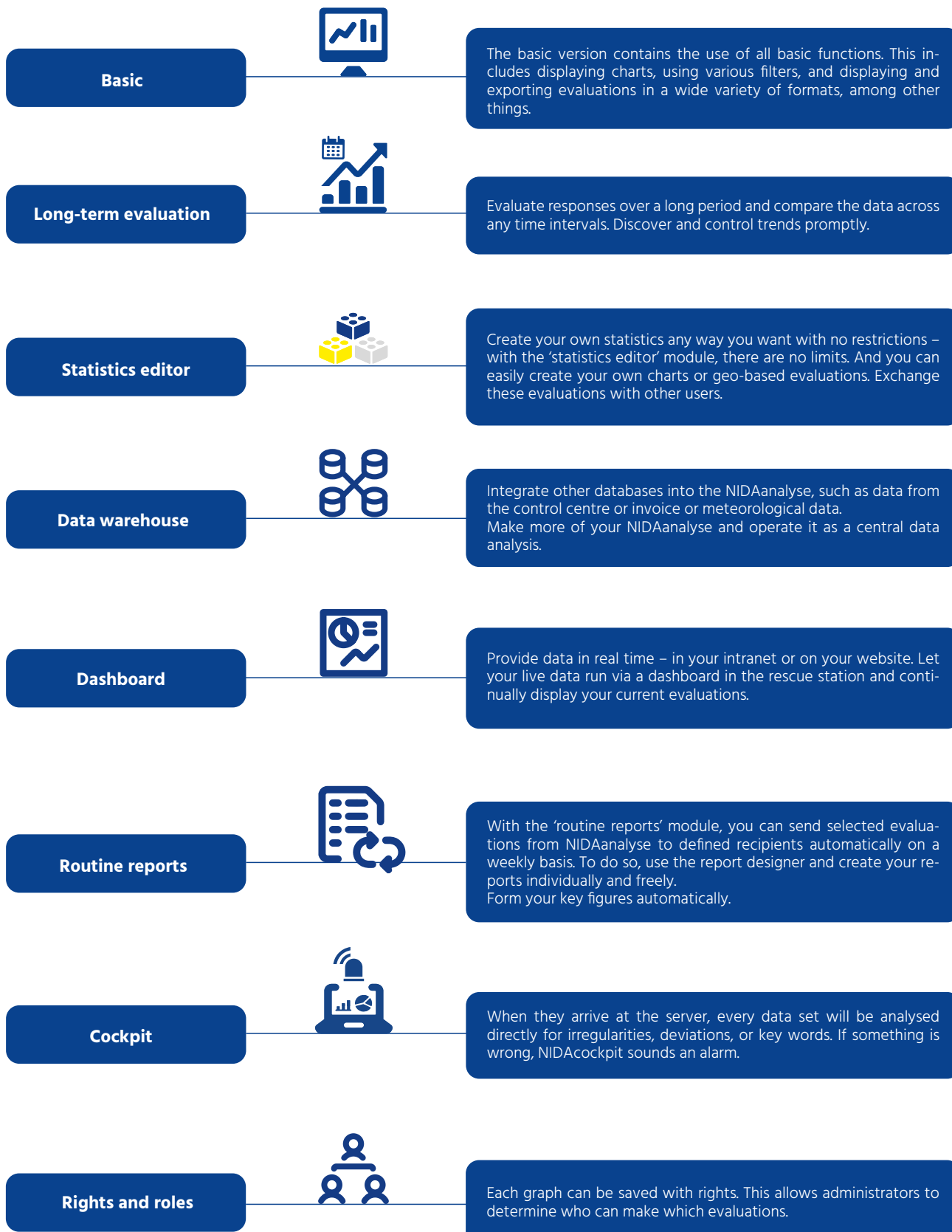
Discover trends, irregularities, or deviations and investigate them further.

- Over 300 standard evaluations
- Known arrangement from NIDAmobile or DIVI protocol
- Interactive dashboards with detailed views

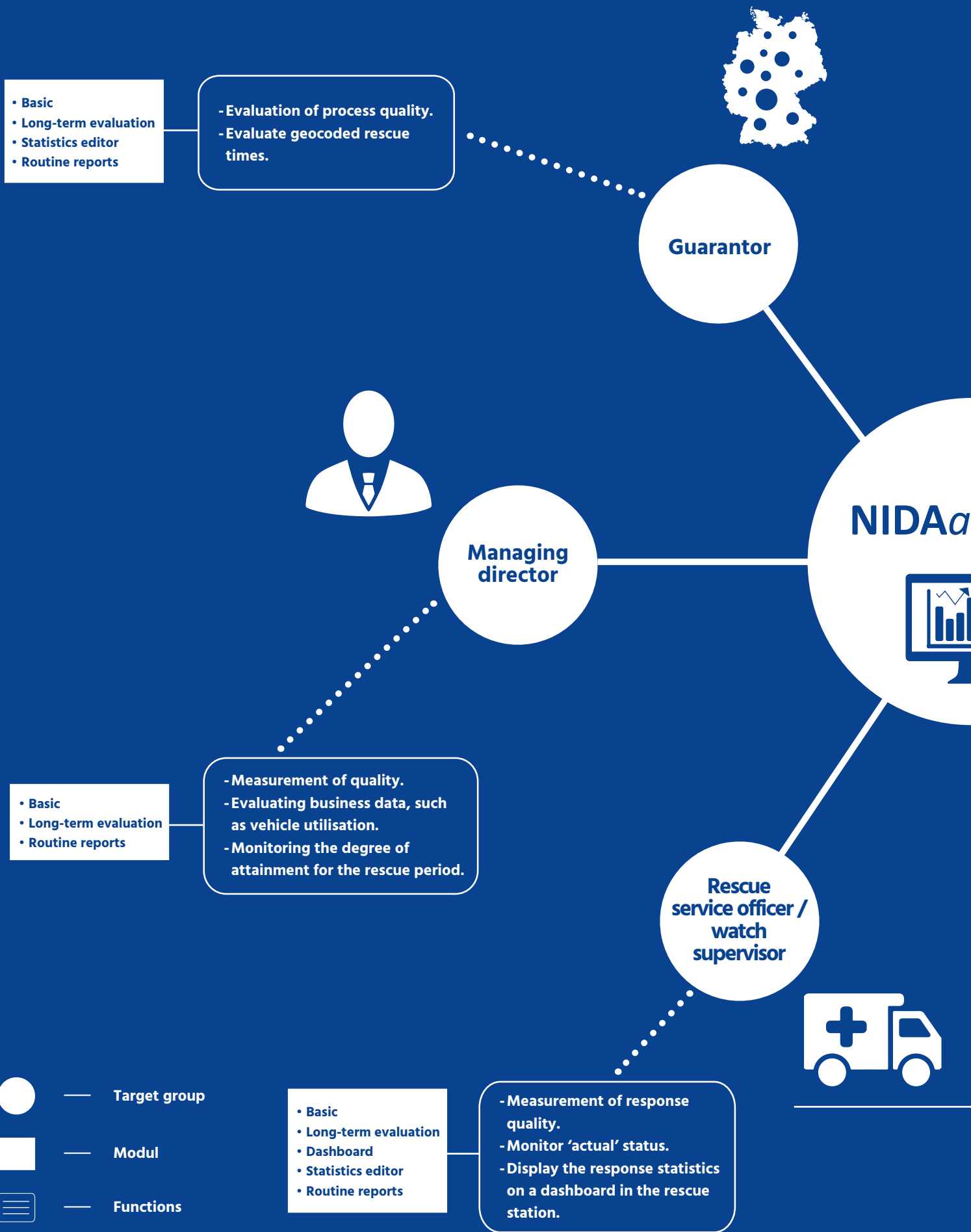


Modules for control and management

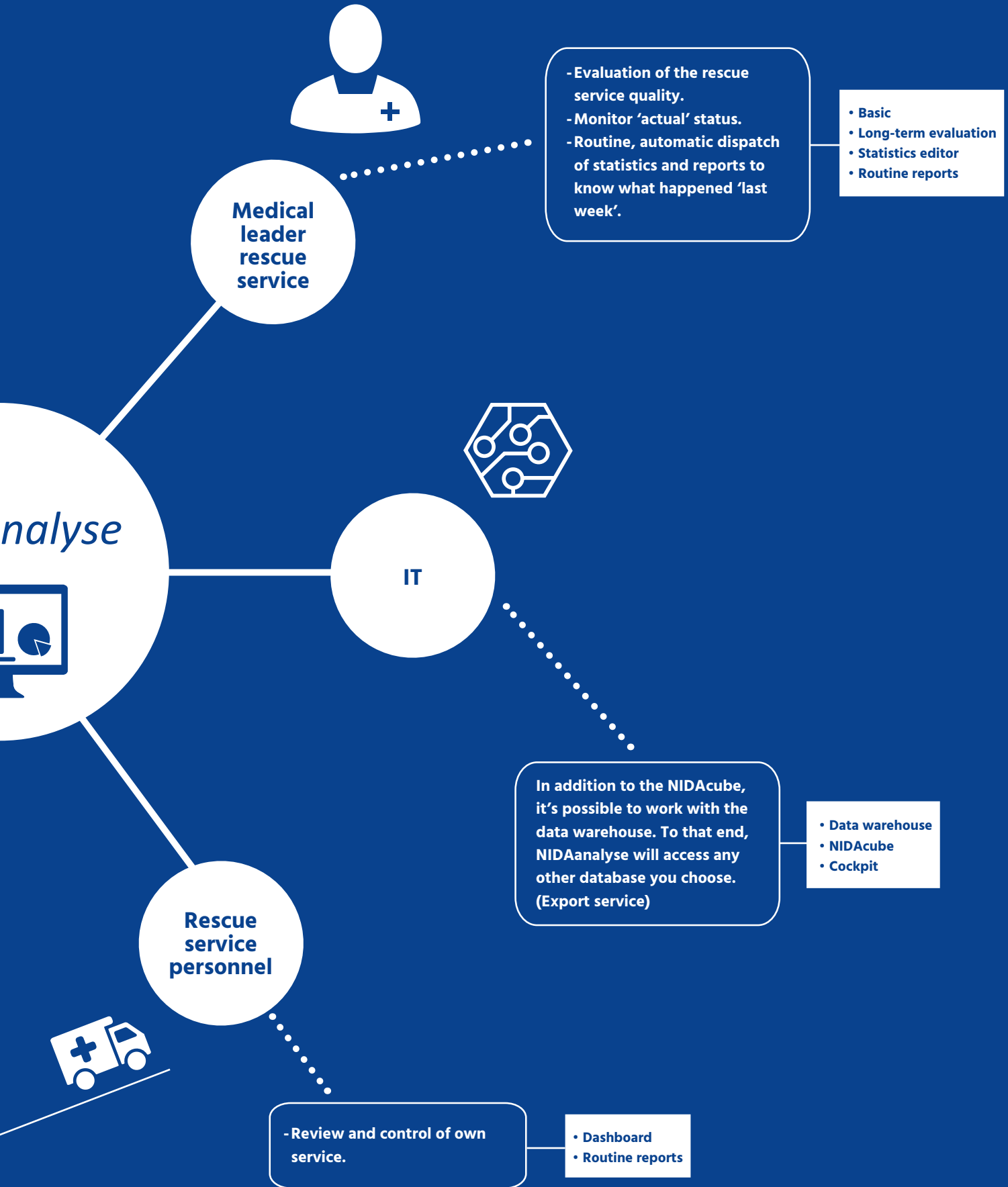
A variety of modules is available to you to optimally control and manage your evaluations individually.



Row



groups



Options at a glance

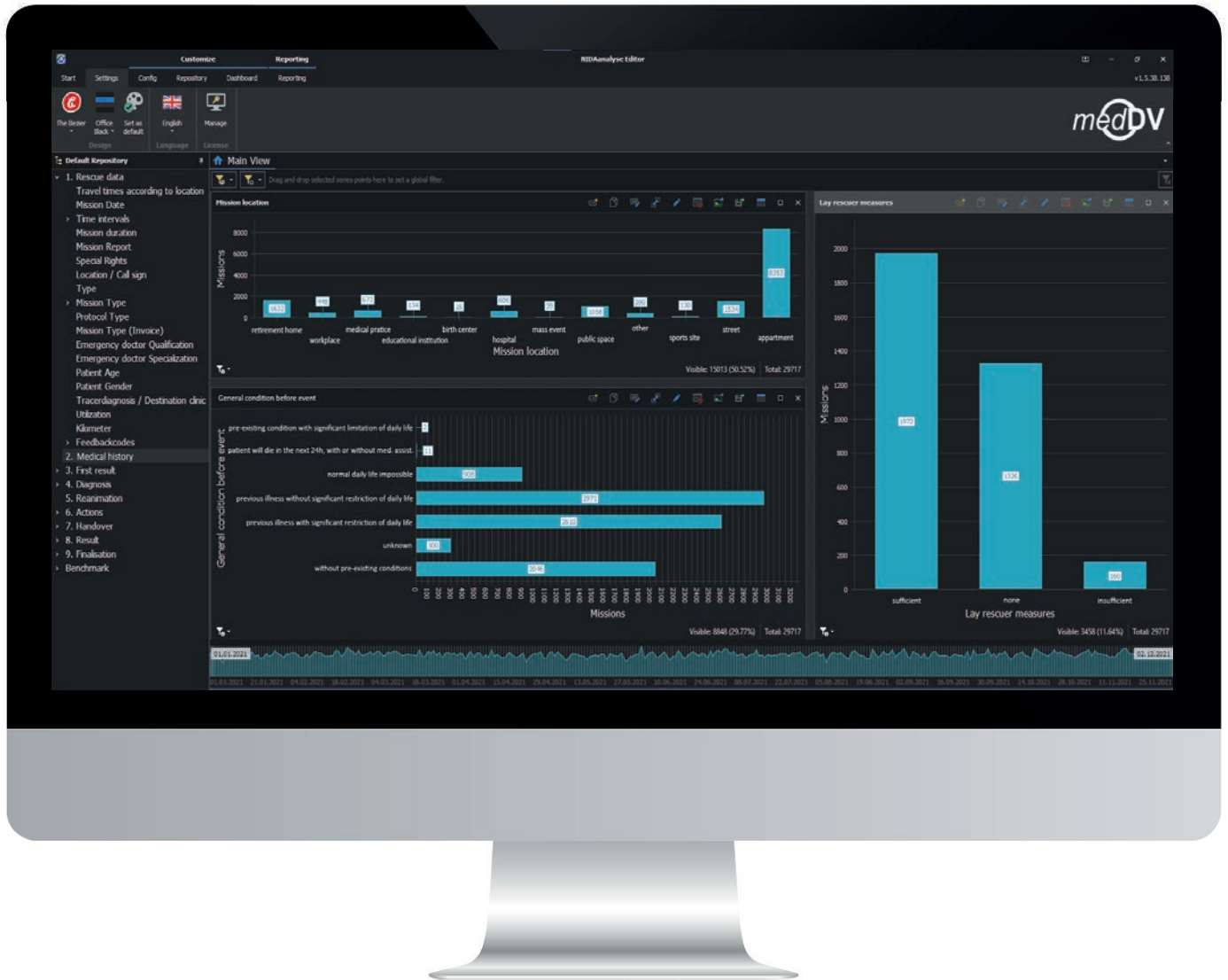
NIDAanalyse offers clear evaluations and individual analysis options.

- ▶ **Visualisation or recorded data**
- ▶ **Observe all response data on a convenient dashboard surface**
- ▶ **Explorative evaluations according to all the data recorded in the emergency protocol**
- ▶ **Set and store your own filters**
- ▶ **Create individual evaluations**
- ▶ **Evaluate capacity utilisation, rescue periods, care and handover times**
- ▶ **Export in various formats**

On this basis, processes and even a possible need for training the team can be optimised. And valuable insight can be gained for response and vehicle planning. For example, the alarm time distribution for certain days, or the response distribution according to the response location, can be observed. At the touch of a button, you can zoom in on these individual values while simultaneously displaying all detailed information for a comprehensive evaluation.

Users can store inquiry configurations that are interesting for them, so analyses that must be carried out on a regular basis can be updated easily. People can consider not only their own organisation but the association level as well so that valuable benchmarks for quality management can be determined. The analysis data can be exported in various formats for further observations.

NIDAanalyse - quick, interactive, and comfortable



An overview exists at every point from technological rescue data on anamnesis to disinfection. There you'll find a compilation of frequently used charts. The charts are interactively linked with each other.

Basic

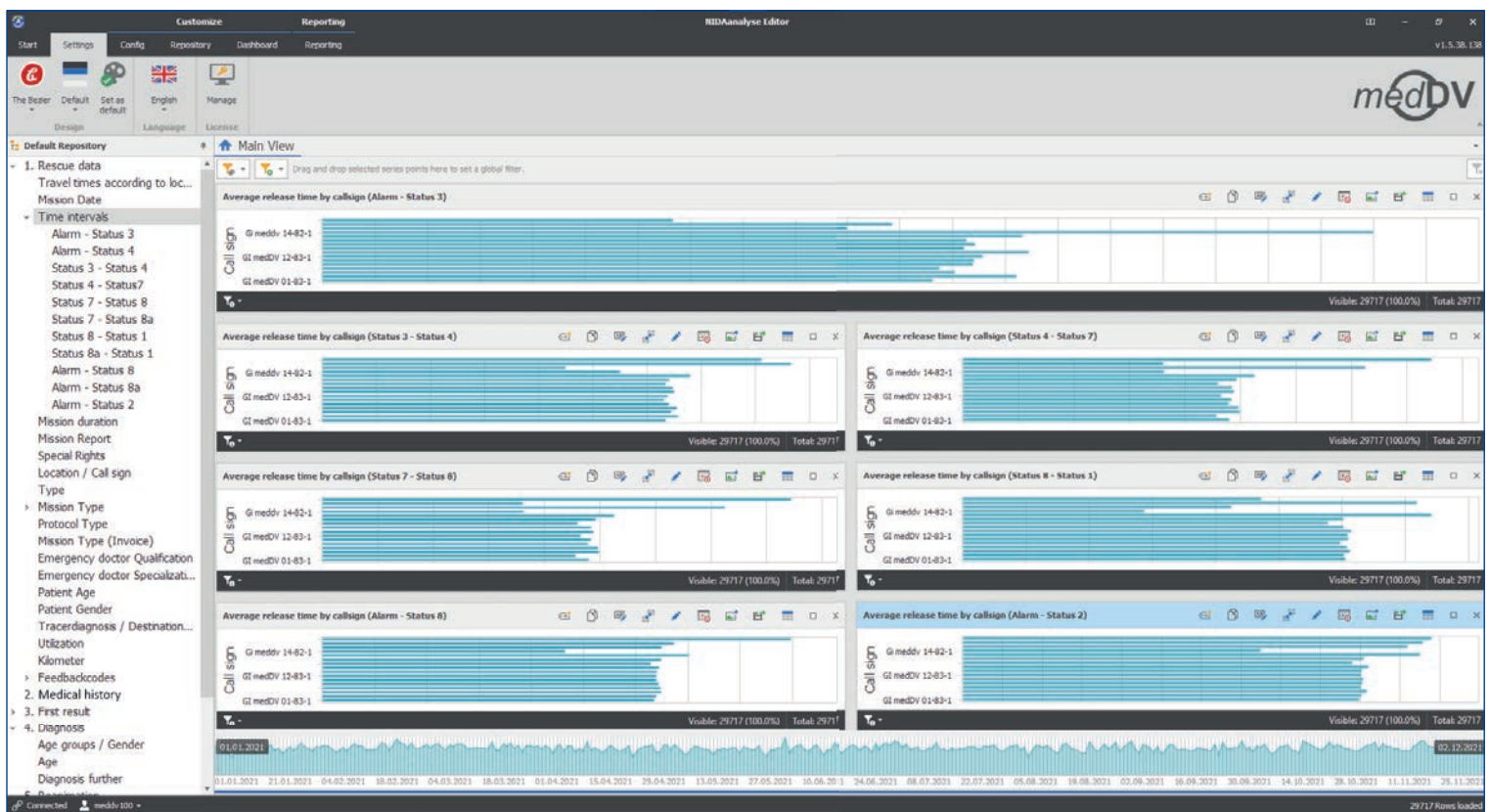


Over 300 ready-made evaluations

The basic version contains over 300 ready-made evaluations. The evaluations can be combined and filtered almost any way you want.

The results can be exported in various formats. The exports include the charts and the data leading to the result.

If you'd like additional evaluations, they can be created for you individually and included in the configuration.



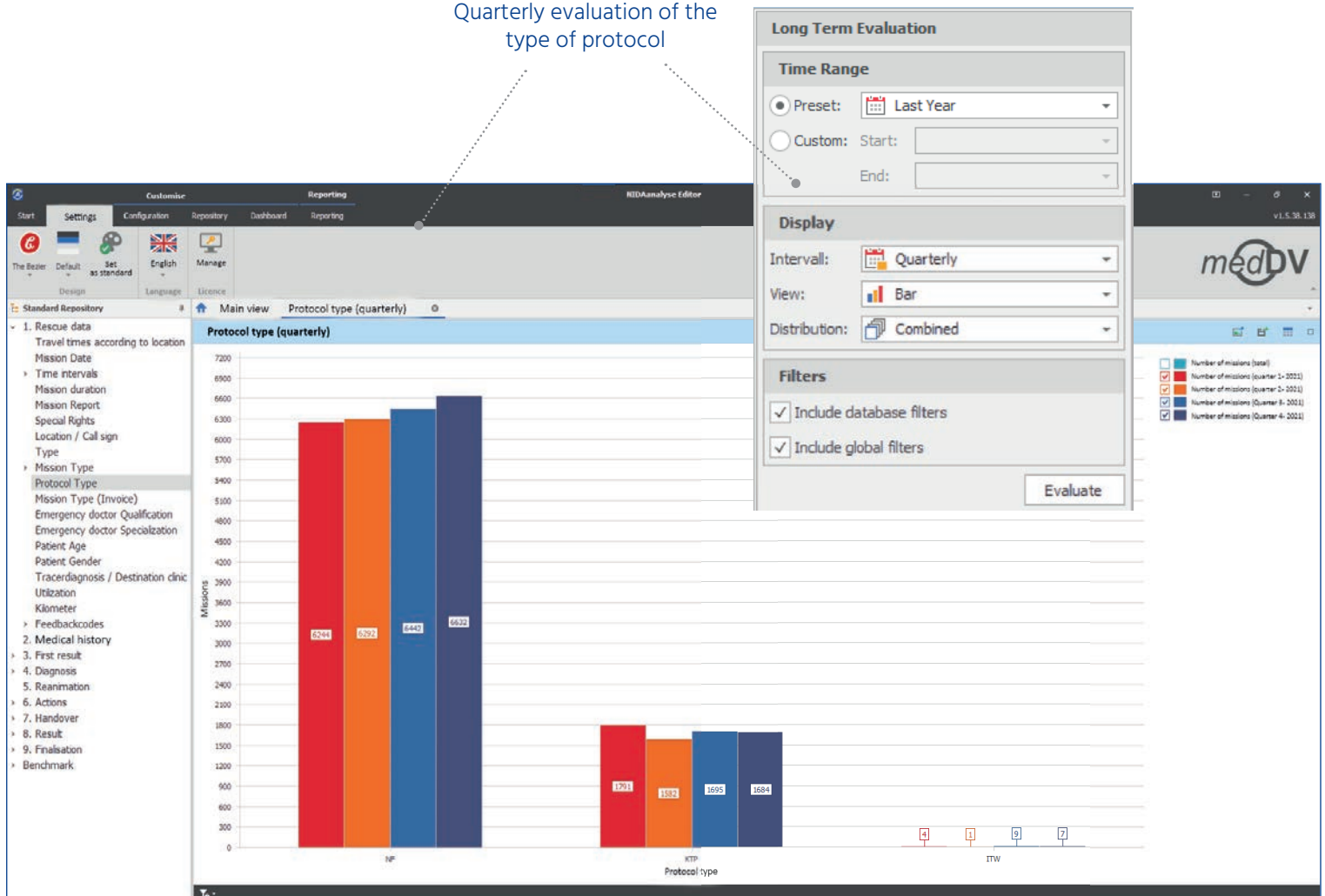
Long-term evaluation



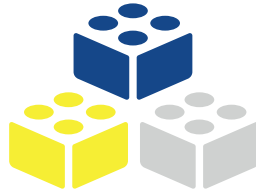
Look to the past to learn for the future

How have the measures changed after further education or training has been performed? Have accidents increased or decreased? How has the distribution of responses in the rescue station changed? With the 'long-term evaluation' module, you can answer such questions quickly and without problems and show the evaluations as a temporal distribution. You'll also quickly notice the increased quality in the PDCA cycle.

Example:
Quarterly evaluation of the type of protocol



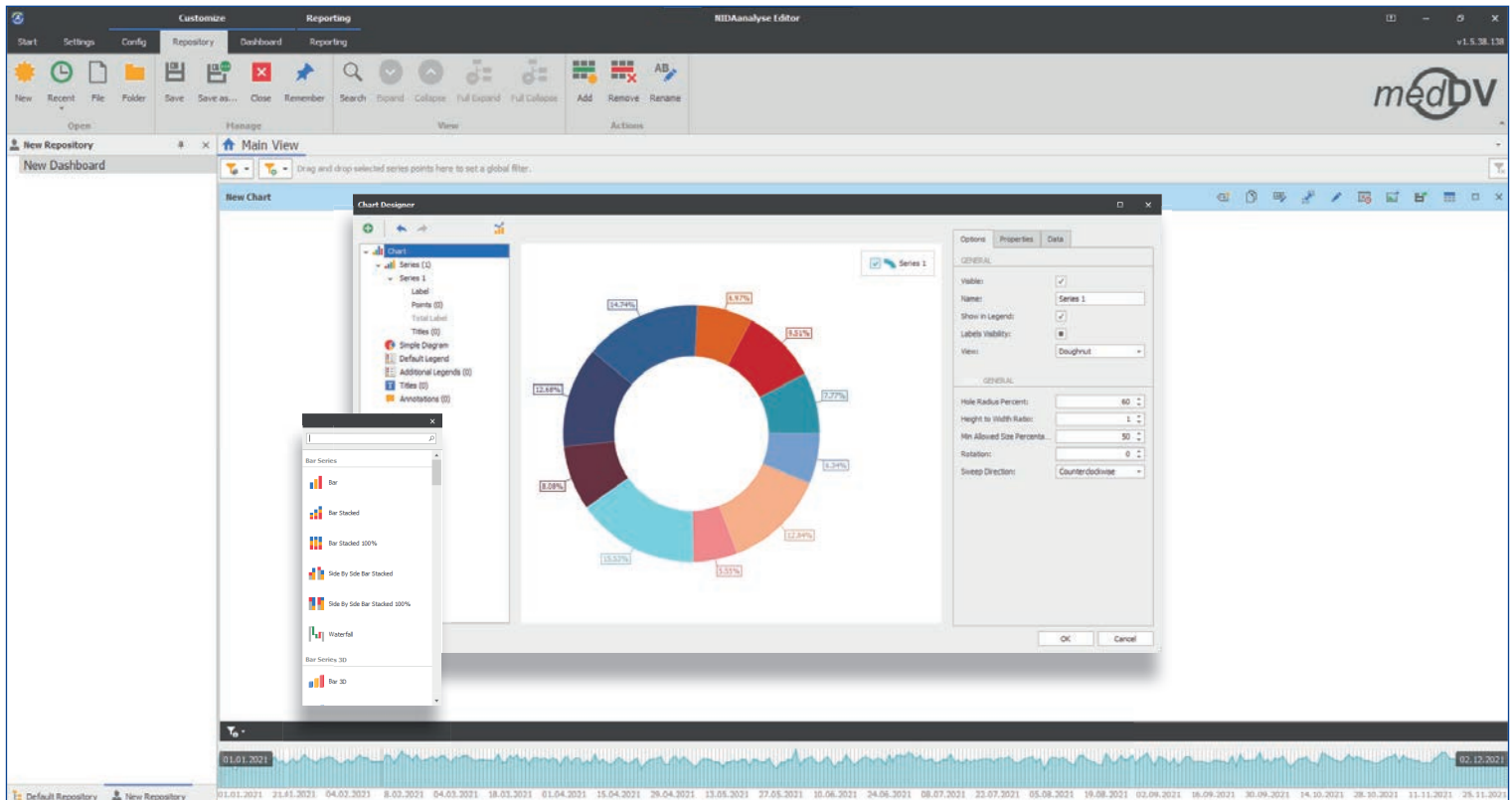
Statistics editor



Create your own statistics without limits

With the 'statistics editor' module, you can create your own evaluations any way you want.

A structured user interface shows you your database contents, which you can then summarise into an evaluation. You also have the option of providing the created configurations to other users of the NIDAAnalyse for their use.

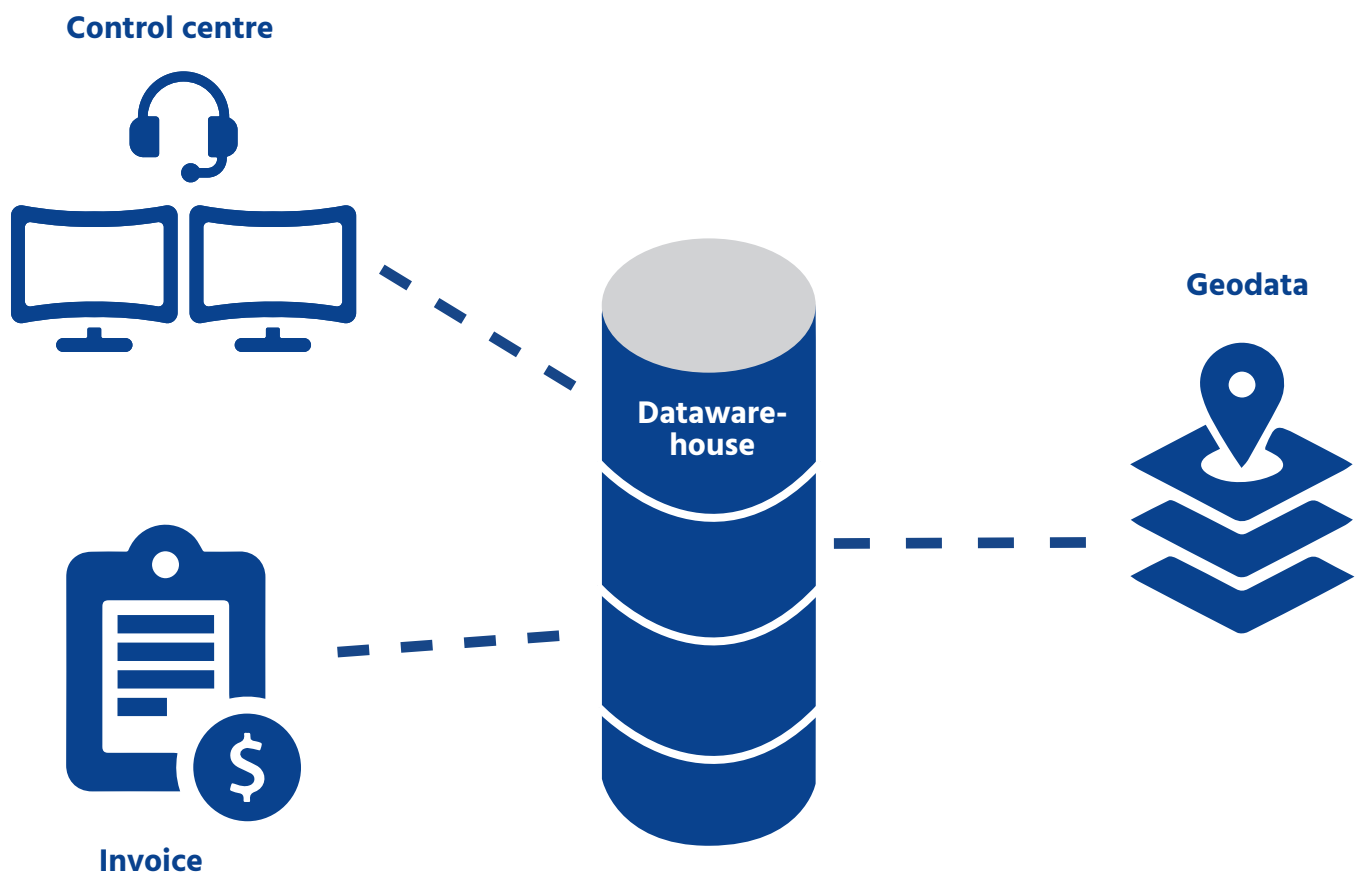


Datawarehouse



Simple connection from external data sources

You can use the 'data warehouse' module in connection with the statistics editor. You can build your own data warehouse by integrating external data sources such as invoices, the control centre, and meteorological data. Specify interfaces to other data sources and import all kinds of databases.



Dashboard



Live and up to date: Response data on the dashboard

Use the NIDAanalyse as a dashboard. Put your charts and figures together any way you would like and publish them as live data (on a dashboard monitor, for example).

The dashboard updates itself at frequent intervals with new response data and shows current parameters/values/charts of the rescue service sector for which it has been configured.

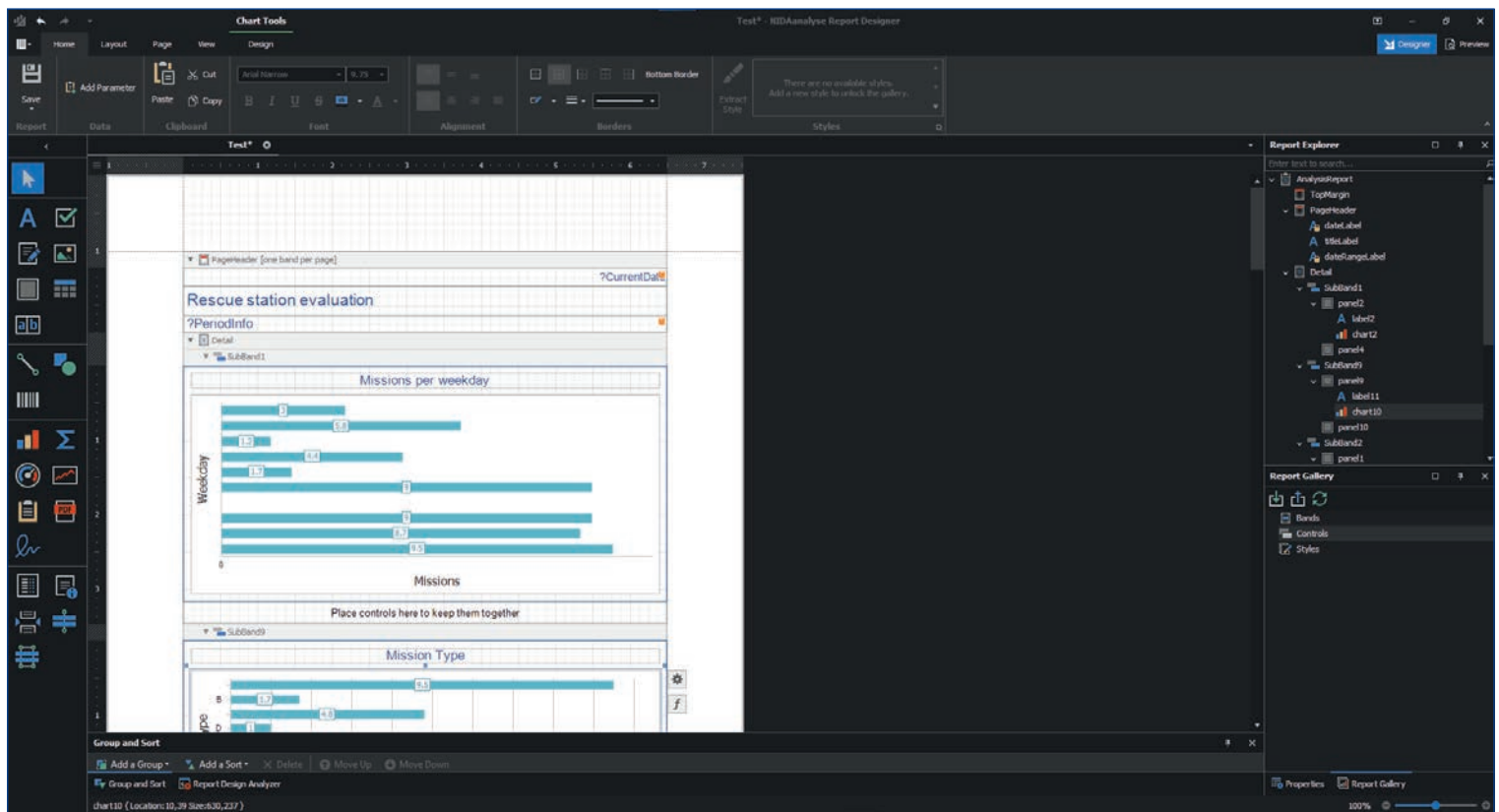


Routine reports



Find all evaluations in your inbox every Monday morning

Use 'routine reports' to send statistics, charts, and other evaluations to selected recipients at adjustable intervals (daily, weekly, monthly, or annually). This can occur electronically, for example, through email.



Cockpit



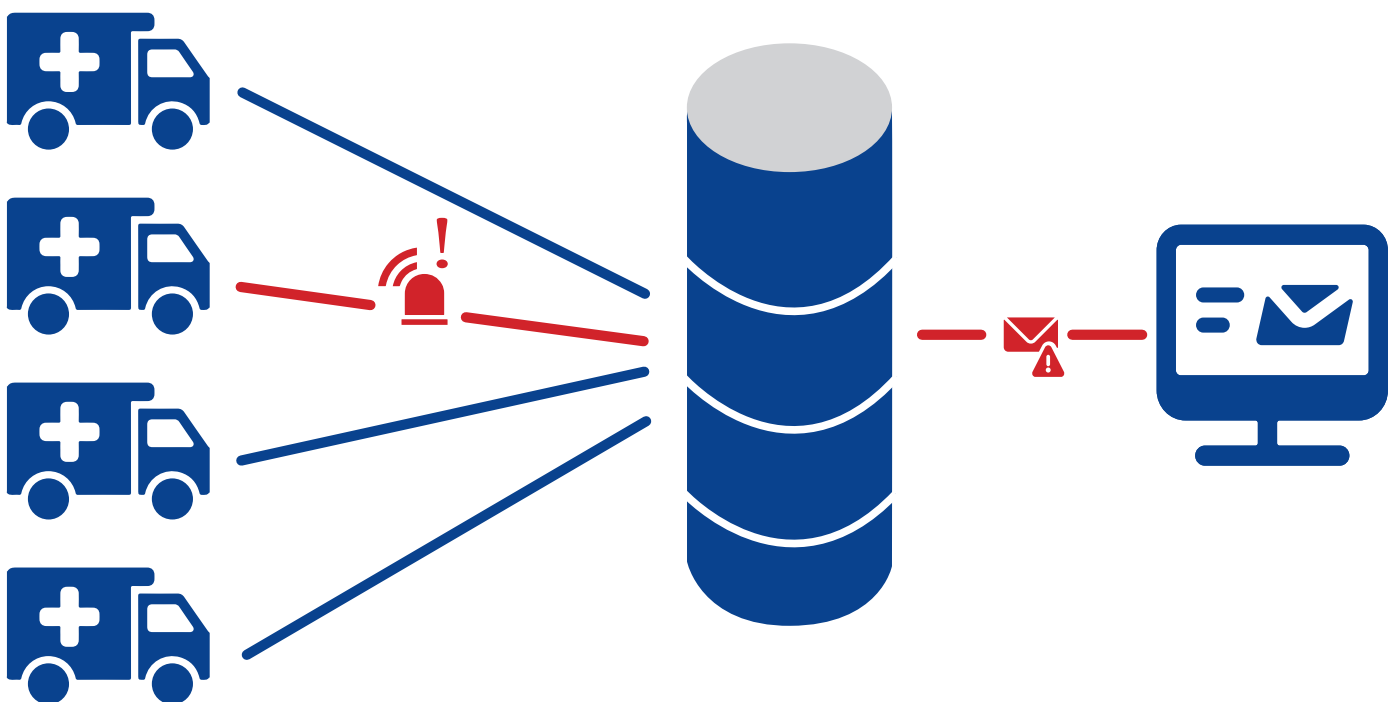
Recognise irregularities automatically: Specify parameters and set alarm thresholds

The 'cockpit' module identifies discrepancies from usual frequencies in the documentation. To that end, the exceedances of the system itself are recognised and limits are determined.

Example: Three patients with potential infections are usually transported in the district each week. If a significant change occurs (seven such people are transported, for example), the server will send an email with the conspicuous elements.

According to this principle, incoming data sets will also be checked for compliance with standards of care. If a standard is not complied with (always depending on the diagnosis), an email will also be written.

Moreover, choose specific keywords and set your own parameters for your alarm thresholds. If these are exceeded, an email will be sent here as well.



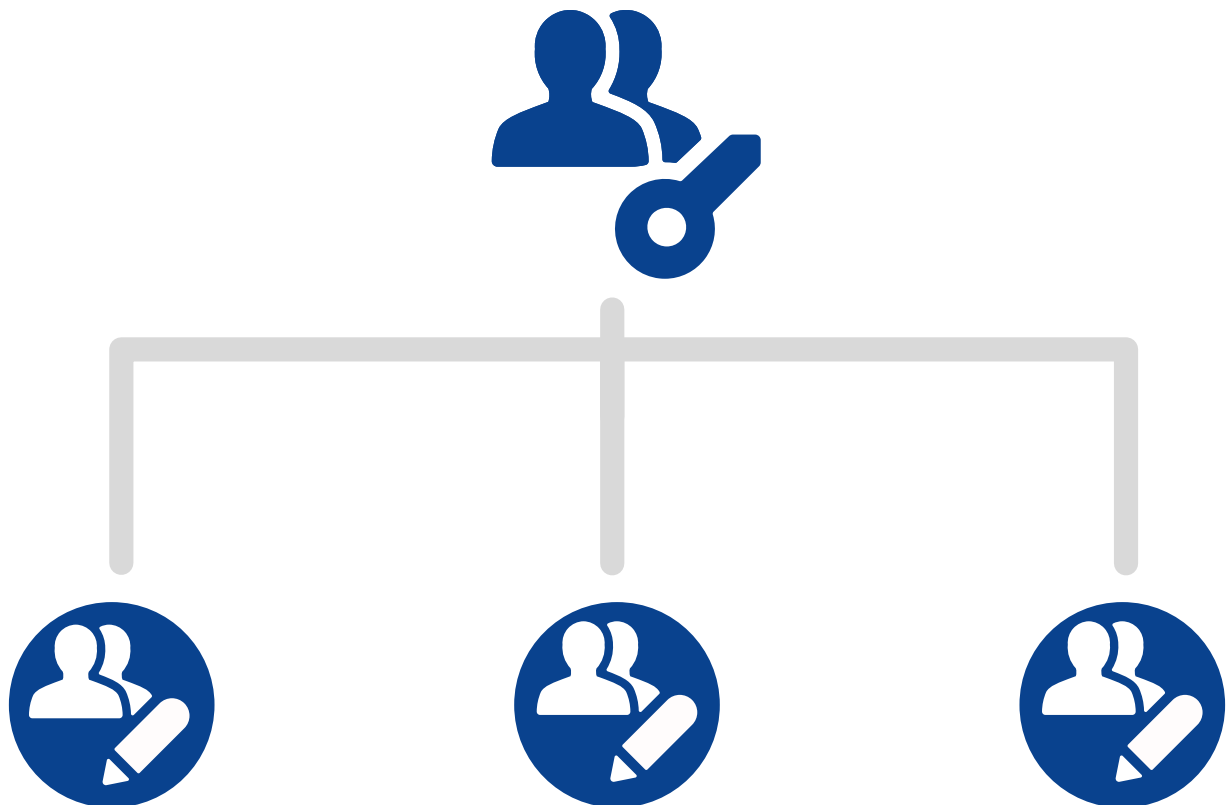
Rights and roles



Grant various access rights

With the 'rights and roles' module, you're given the chance to allocate access rights through an administrator.

To that end, you can grant every user or defined user groups different access rights based on individual charts, evaluations, categories, or available data sets.



Benefits at a glance

Quality optimisation of rescue operations through comprehensive evaluation of responses

Customised evaluations for rescue service workers and managers

Comprehensive analyses by time period, diagnosis and corresponding patient care

Standardised reports for each employee, which they can use to observe their own performance and evaluate it in comparison with the watch and the association

Evaluation of utilization, supply and handover times

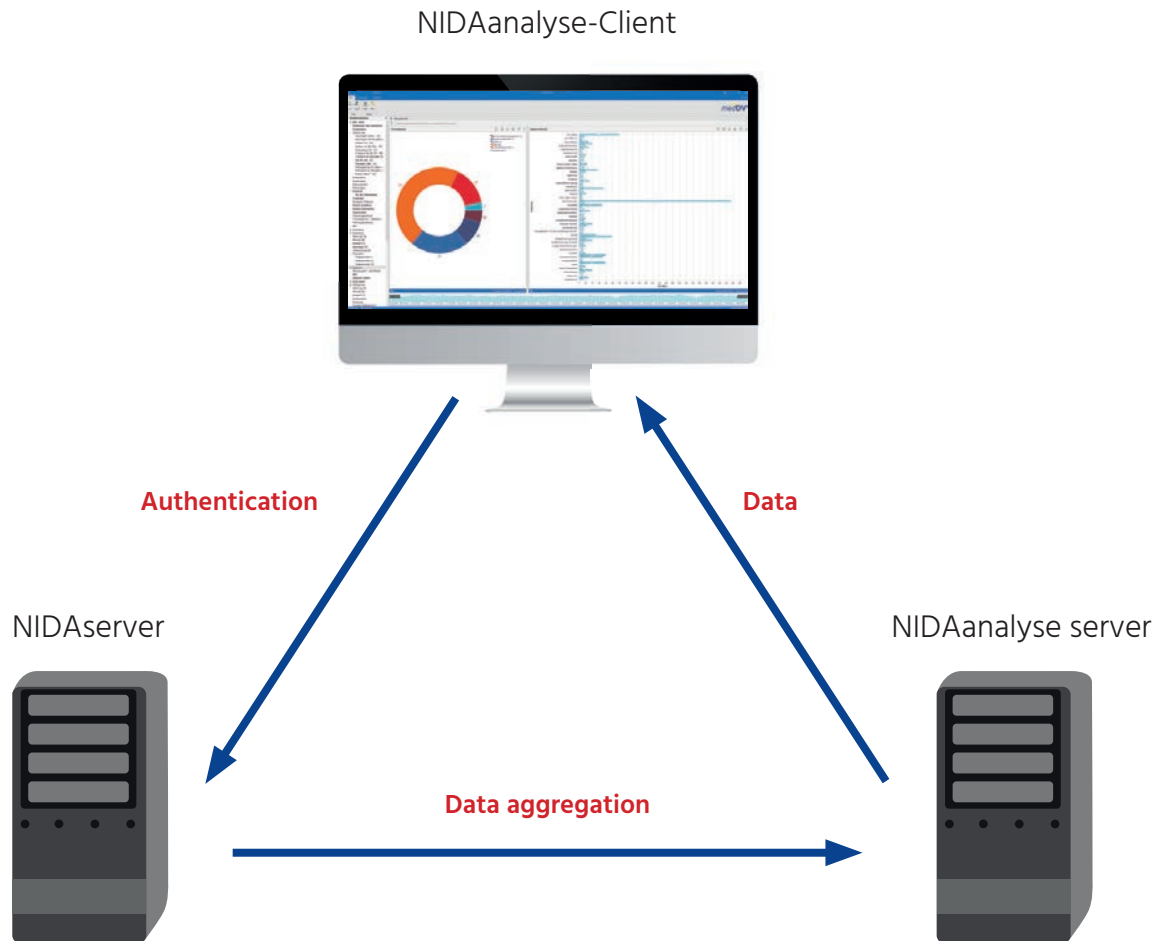
Digital archiving of response data, logs, pictures, etc. with NIDAarchiv



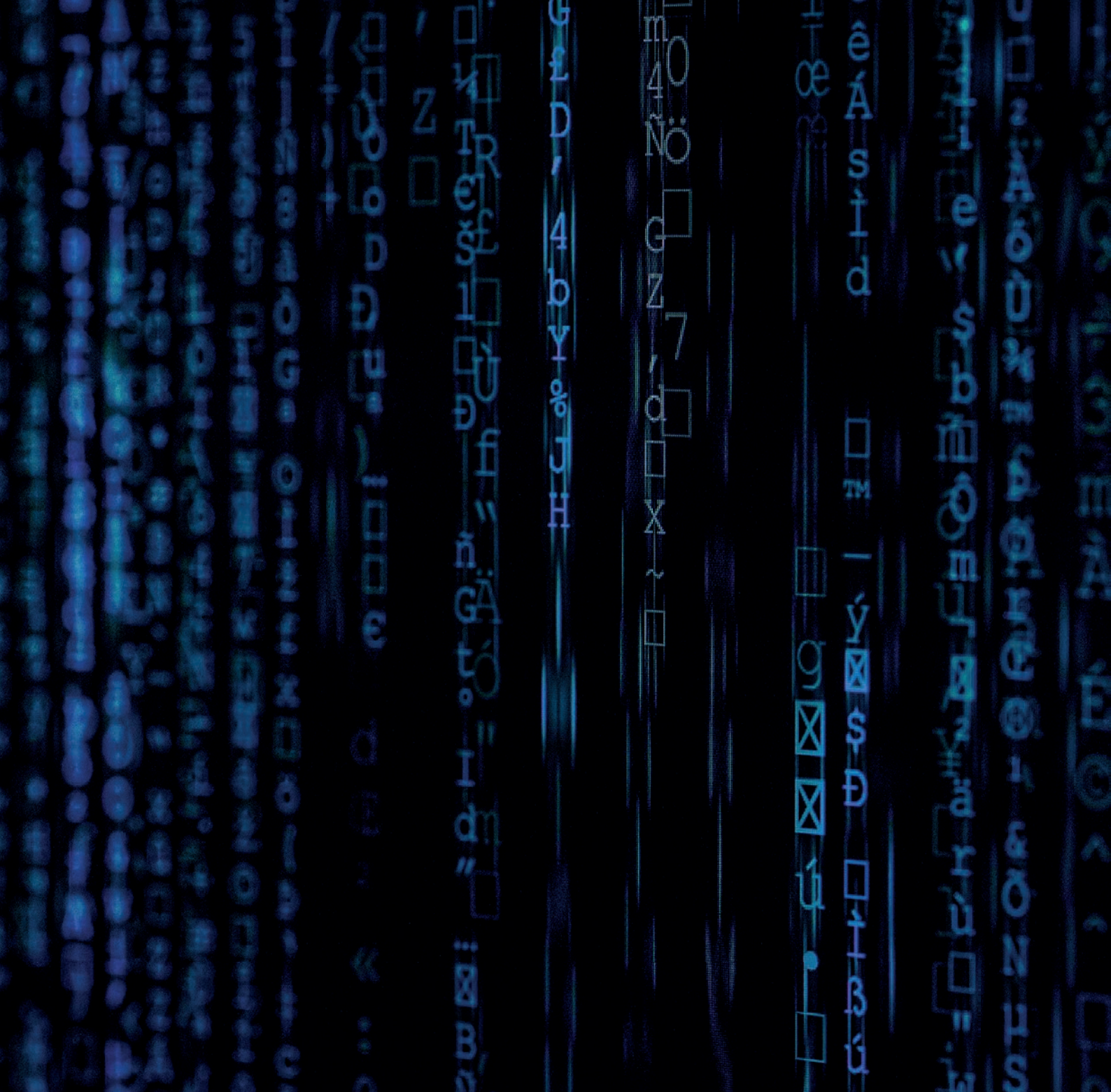
NIDAAnalyse is an outstanding basis for effective quality and process management.

This solution offers managers a convenient dashboard interface with which they can thoroughly observe and evaluate all determinative response data. Explorative evaluations can be created according to all the data recorded in the emergency protocol. With NIDAAnalyse's drill-down options, you can observe interesting values in detail.

From the standpoint of IT...



The NIDAserver forms the data basis for the NIDAanalyse server. These data are aggregated along the way by NIDAcube, thus precalculated and pseudonymised. Examples of pre-calculation are time intervals such as rescue period, duration of care, duration of transport, and duration of handover. This pre-calculation of evaluation time leads to significantly more efficient results. The choice of which data will be pseudonymised can be individually adjusted.



medDV GmbH

Rudolf-Diesel-Straße 10-12
35463 Fernwald

Phone +49 6404 20517-0
Fax +49 6404 20517-517

info@medDV.de
www.medDV.com



Saving Lives.
Optimising Processes.
Reducing Costs.